



Find all our others
fixing accessories on
www.amphenol-airlb.fr

LB Clamps

The **Light Blue Clamps**:
Alternative to metallic attachment system



Industry



BROCHURE 01/23 - V2.0

Customer Service
2 rue Clément ADER, Zac de Wé
08110 CARIGNAN
FRANCE
Tel : +33 (0)3 24 22 32 66
Fax : +33 (0)3 24 22 38 72
customer-service@amphenol-airlb.fr
www.amphenol-airlb.fr



Amphenol Air LB

Your Satisfaction. Everyday. Everywhere.

PRESENTATION

LB Clamps series is a lightweight version of the metallic Cable Clamps series with an important weight saving.

WEIGHT SAVING
Up to 73% !

They are designed to keep the cable harnesses or hydraulic pipes securely maintained on structure.

They have an integrated prelocking system which allows to preposition the clamp on the harness.

TIME SAVING

The screw (not supplied) allows to lock the clamp and fix it on structure in one operation

LB Clamps absorb shocks and vibrations, and offer an unequalled protection of bundles and pipes against pinching, crushing or mechanical wear. The silicone cushion limits noise pollution from structures by absorbing vibrations and separating the pipes from the wall.

RELIABILITY

They are suited for applications in harsh environment and temperatures up to 225°C.

HIGH TEMPERATURE

Thanks to their design, it is possible to stack them whatever their size.

They are available in 10 sizes, for bundles or pipes diameters from 5 to 25,4 mm.

CLAMP RANGE

10 sizes available

Size	04	06	08	10	12	14	18	21	22	29
Bundle / Pipe diameter	5	6,3	8	9,5	11	12,7	15,9	18	19	25,4
Tolerance	± 0,5									

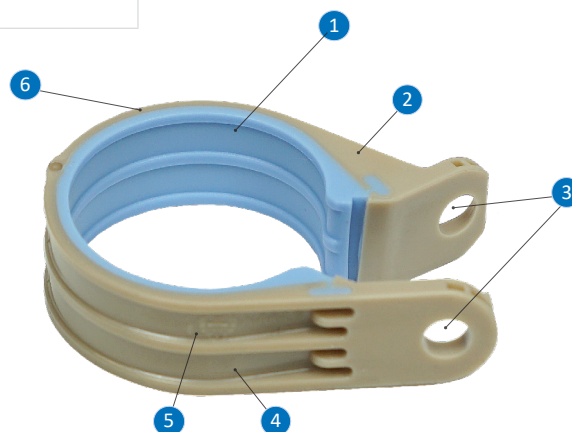
REACH AND ROHS

In accordance with the REACH spec.

In accordance with the RoHS spec.

CAPTION

- ① - Silicone cushion
- ② - Clamp band
- ③ - Fixing Ø 5,2 mm
- ④ - P/N engraved
- ⑤ - Date code
- ⑥ - Clamp size engraved



MAIN TECHNICAL FEATURES

MATERIAL

Clamp band : Thermoplastic
Cushion : Silicone elastomer

ENVIRONMENTAL

Operating temperature : -55° to +225°C permanent
Solar radiation : suitable for outdoor use (56 days of exposure according to procedure II level A1 of the MIL STD 810 G method 505.5 test standard)

ELECTRICAL (as per RTCA DO 160G standard)

Insulation resistance : > 10⁶ MΩ

FLAMMABILITY / SMOKE / TOXICITY

UL94 : UL94 V0 for 1,5 mm (Thermoplastic)
UL94 HB for 3 mm (Silicone elastomer)

FLUIDS RESISTANCE (as per RTCA DO 160G standard)

Spray tests: fuels, hydraulic fluids, lubrication oils, solvent and cleaning fluids, de-icing fluids, insecticides

MECHANICAL (as per RTCA DO 160G standard)

Shocks : 6g during 20 ms
Vibrations : 3 H per axis, resonance frequency > 30 Hz
Windmilling test : 6g, frequency 2,9 to 30 Hz
Load test : depending on the clamp size, in 4 directions
Nose wheel imbalance : 3,5 to 10g, frequency 5 to 27 Hz

MOUNTING (as per RTCA DO 160G standard)

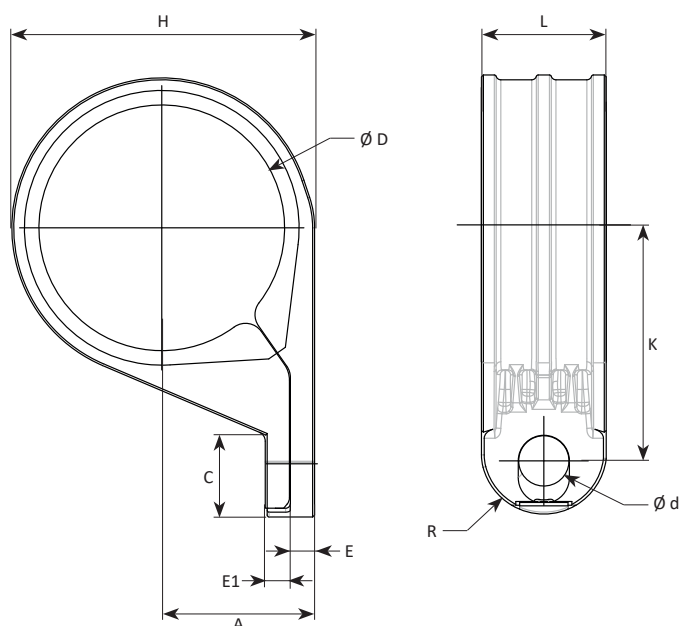
Closure and fixing : Screw / washer Ø 5,2 mm
Screw (recommended) : .1900-32UNJF or NSA5191-3 or M5
Washer (recommended) : NAS1149D0332J or for M5 screw
Tightening torque : 4,2 Nm
Clamp opening : 90° maximum recommended

WEIGHTS

Size	04	06	08	10	12	14	18	21	22	29
Weight of LB Clamps (g)	1,40	1,55	1,75	1,95	2,25	2,55	3,15	3,45	3,65	4,90
Weight of metallic clamps (g)	4,60	5,50	6,30	7,10	7,80	8,90	10,60	11,90	12,40	15,50
Weight saved	-70%	-72%	-72%	-73%	-71%	-71%	-70%	-71%	-71%	-68%

PART NUMBERS & DIMENSIONS

TECHNICAL DRAWINGS



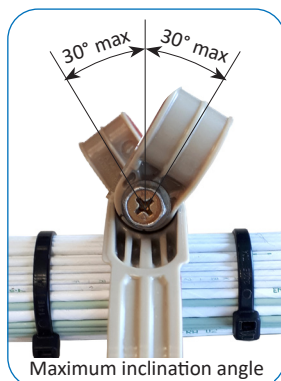
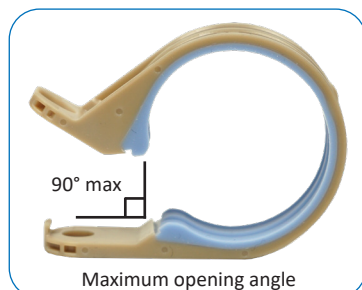
PART NUMBERS AND DIMENSIONS

Part Number LB Clamps	Clamp size	Bundle / Pipe diameter ØD		A		K		C	E	E1	R	L	Ød	H (for information)	
		mm	tolerance	mm	tolerance	mm	tolerance	mm	mm	mm	mm	mm	mm	mm	tolerance
CC5516C04L	04	5	± 0,5	5,8	± 0,3	12,6	± 0,5	8,5	2	2	6,5 ± 0,2	13,1 maxi	5,2	10,8	± 0,5
CC5516C06L	06	6,3		6,6		13,4								12,275	
CC5516C08L	08	8		7,3		14,1								13,8	
CC5516C10L	10	9,5		8,1		14,9								15,35	
CC5516C12L	12	11		8,8		15,6								16,8	
CC5516C14L	14	12,7		9,8		16,6								18,85	
CC5516C18L	18	15,9		11,3		19,9								21,95	
CC5516C21L	21	18		12,3		20,9								24	
CC5516C22L	22	19		12,8		21,3								25	
CC5516C29L	29	25,4		15,8		24,4			2,5	2,5				31,3	± 0,8

IMPLEMENTATION

RECOMMENDATIONS

Regarding the insertion of cable bundles or hydraulic pipes inside the LB Clamps, Amphenol Air LB France recommend a maximum opening angle of 90°. When stacking multiple clamps, the maximum angle of inclination is 30°.



LB Clamps are closed and fixed on structure, in one operation, using a screw and a washer (not supplied) matching the diameter of the fixing hole (5,2 mm). Amphenol Air LB France recommend to use the following hardware:

- Screw: .1900-32UNJF or NSA5191-3 or M5
- Washer: NAS1149D0332J or for M5 screw

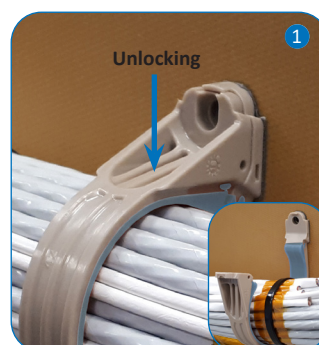
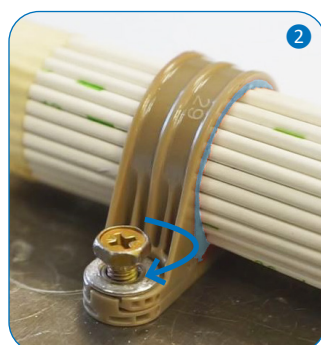
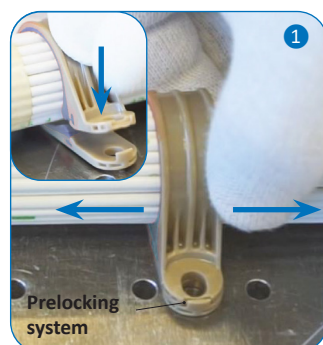
Tightening torque recommended: 4,2 Nm



IMPLEMENTATION INSTRUCTIONS

Mounting:

- 1 Prepositioning of clamps on cable bundles and prelocking. Even prelocked, it is possible to adjust the position of clamps by sliding along the bundle.
- 2 Locking and fixing on structure with screw and washer in one operation.



Example of stacking several clamps



Example of stacking several clamps on structure

