

We reinvent the past to build the future



## Reengineering of obsolete products: why?

When one more PN becomes obsolete within a system,  
When your original supplier let you down  
but give up its intellectual property on the component,  
-> **We can redesign your original product.**

Advantages:

You do not need to redesign / requalify all you system  
We redesign an interchangeable product

-> **Cost saving**

-> **Time saving**

-> **Lasting and reliable solution and partner**



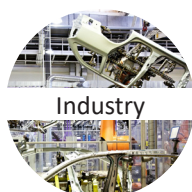
Aeronautic



Defence



Railway



Industry



Nuclear



Power

Your partner for high performance connectors and attachment systems  
Specialist in molding and overmolding



We reinvent the past to build the future

## Some examples of reengineering incorporating molding / overmolding



Railway

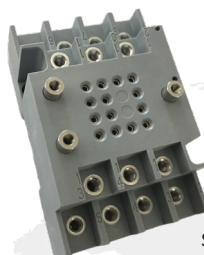


Pantograph horn  
prototype

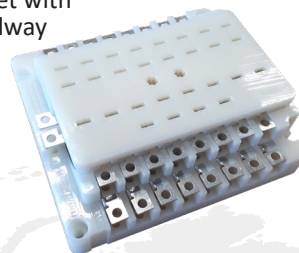


Relay socket  
with specific PCB

Relay socket with  
PCB for railway  
signaling



Relay socket  
screw connection for  
embedded application



Relay socket  
for embedded  
application

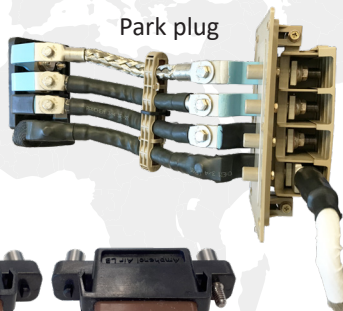
Socket  
for light



Bracket



Park plug



Aeronautic



Defence



Fuse carrier



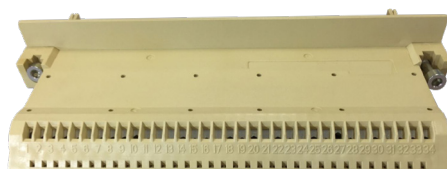
Quick install relay sockets



Receptacle  
9 points



Nuclear



Rackable instrumentation  
connector receptacle

Instrumentation connector  
plug and receptacle  
(1400 mating cycles)



Your partner for high performance connectors and attachment systems  
Specialist in molding and overmolding

