

CAPABILITIES

Amphenol Air LB, specialized in electrical and optical interconnect systems, as well as attachment systems and wiring accessories, presents the capabilities of its optical workshop allowing to meet your requests in this area.

■ SINGLE OR MULTI-WAY CONTACT WIRING

- ARINC801 contacts (Luxcis)



- ABS1379 / EN4531 contacts (Elio)



- IEC61754-20 (LC) / IEC61754-4 (SC) / IEC61754-13 (FC) / IEC61754-2 (ST) connectors



- IEC61754-7 connector (MPO / MTP)



■ OPTICAL CABLE ASSEMBLIES

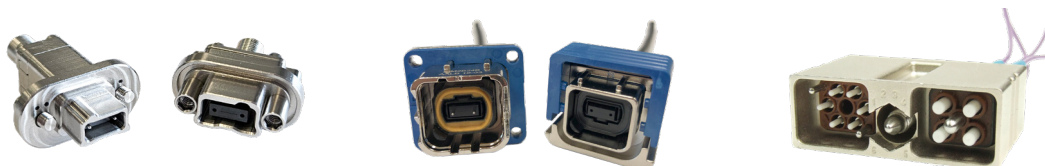
We can offer you our cable assemblies capabilities.
Consult us with:

- your plans
- your requirements / specifications
 - Type of cable needed, standard, ref...
 - Required protection, shielding, continuity, mechanical protection
 - Marking
 - Length and derivation
 - ...

■ IMPLEMENTATION

Ferrule type	Contacts
Ø1,25 mm	Luxcis / LC - PC
	Luxcis / LC - APC
Ø2,5 mm	ELIO / FC / ST - PC
	ELIO / FC / ST - APC
MT	MT - PC
	MT - APC

■ SOME EXAMPLES OF AMPHENOL AIR LB OPTICAL CONNECTORS



EQUIPMENT

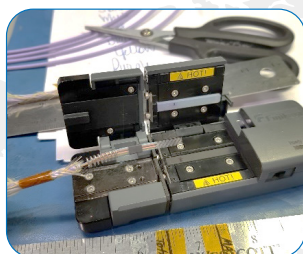
The Amphenol Air LB optical workshop has numerous equipment and materials dedicated to assembly, connection and tests.

The manufacturing process includes the following steps:

1 CABLE PREPARATION (cutting the cable to length + component passage + stripping).

2 RIBONIZATION (arrangement of fibers + bonding of fibers in the form of layers).

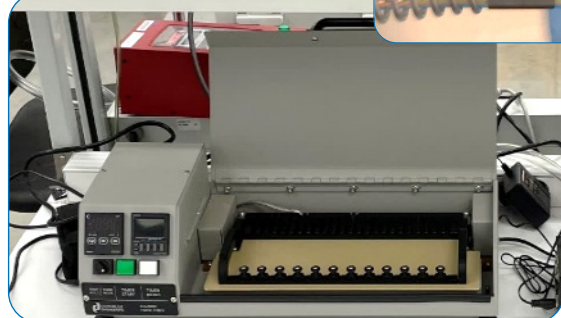
3 CONNECTION



- Stripping of the fiber (expose the fiber, fiber buffer removal).

- Assembly of components (spring + boot) + bonding of the ferrule.

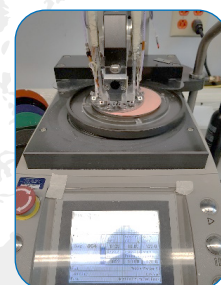
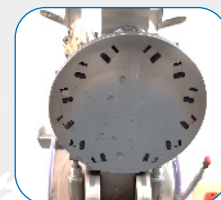
- Epoxy cooking.



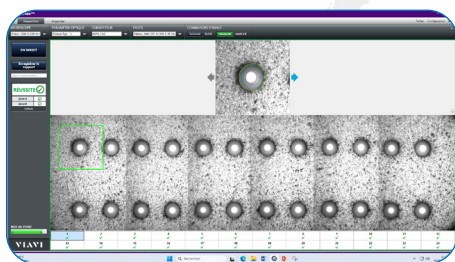
4 CLEAVAGE OF OPTICAL FIBER (clean cut of the optical fiber at the ferrule outlet).

5 POLISHING

- Preparation of optical / light transmission surface.



6 TESTS & REPORTS



- Inspection.

- Interferometry (Test of optical surface geometry).

- Final test IL / RL.

➔ Optimal quality guaranteed.

