

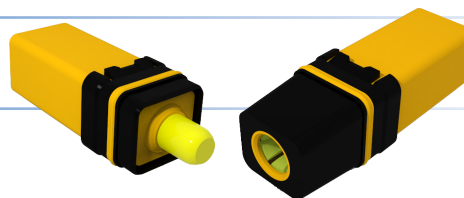
SIM MODULE SIZE 04

High Voltage



For power transmission up to 125 Amp.

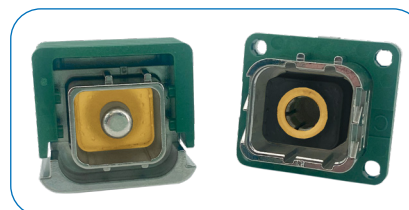
Product in progress,
please consult us.



Aeronautics
Defence

MODULES AND CONTACTS

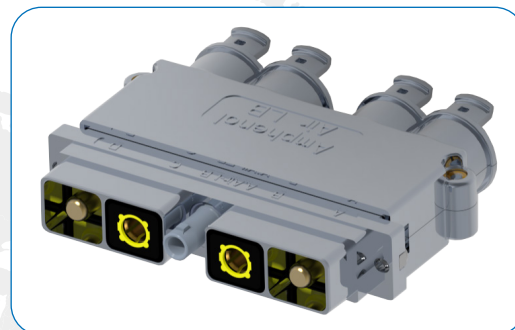
Amphenol Air LB expands its range of SIM EN4165 modules for power transmission with the SIM Size 04 module. This innovative design allows the use of new contact sizes in the EN4165 module shape.



MODULES

Configuration:
- 1 contact size 04

Amphenol Air LB offers:
- Modules for crimped contacts size 04, AWG 04



CONTACTS

# Contacts	Flange diameter	Current rating	Type	AS39029 P/N	AWG	Crimping tools
04/04	Ø10,52 - Ø10,59	80 Amp	Pin	AS39029/29-215	04	Crimping tool: M22520/23-01 Die set: M22520/23-04 Locator: M22520/23-11
	Ø10,52 - Ø10,59	80 Amp	Socket	AS39029/30-221	04	
04/04 Temper Grip	Ø10,52 - Ø10,59	125 Amp ⁽¹⁾	Pin	-	04	
	Ø10,52 - Ø10,59	125 Amp ⁽¹⁾	Socket	-	04	

⁽¹⁾ Current carrying capacity (40°C heat rise).

TECHNICAL DATA

CLIMATIC

Operating temperature : -65°C to +200°C

ELECTRICAL

Withstanding voltage : 5000 V eff. 50 Hz at sea level
(mated connector) 3000 V eff. 50 Hz at 45 000 ft (145 mbar)
2000 V eff. 50 HZ at 100 000 ft (11 mbar)

Insulation resistance : > 5000 MΩ

QUALIFICATIONS

Compliant with EN4165 specifications and beyond.
Module compliant with Reach and RoHS specifications.



Amphenol Air LB
Your Satisfaction. Everyday. Everywhere.

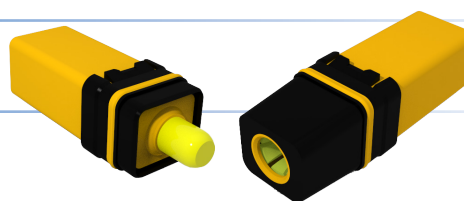


SIM MODULE SIZE 04

High Voltage



For power transmission up to 125 Amp.



Aeronautics
Defence

PART NUMBERS

MODULE

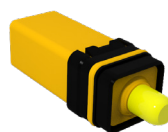
Module type	Part numbers	
	Male	Female
Size 04	SIM * 0104 P * *	SIM * 0104 S * *

Peripheral sealing
E: Sealed
M: Not sealed

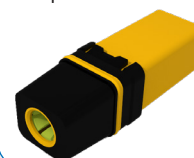
Polarization
N, A, B, C, D, E, F

Nothing: Supplied without contact
C: Supplied with contacts M39029
D: Supplied with contacts HV

Male module for
crimped contacts



Female module for
crimped contacts

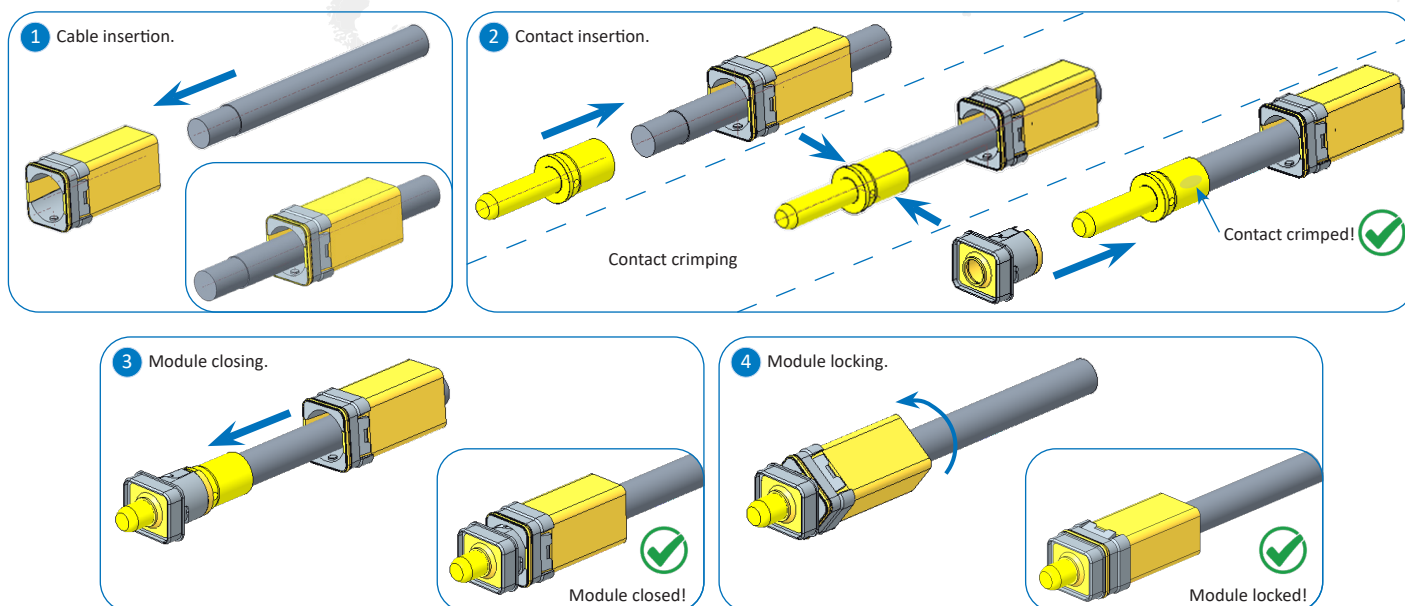


CONTACT INSERTION

The module consists of two parts (front and rear insulators) to allow the insertion of the contact (integrated sleeve). A 1/4 turn system allows contact to be maintained in its housing and the solidarity of the two front and rear insulators.



No tool is necessary that allows an easy mounting / unmouting.



This document is non-contractual. The information included in this catalogue is subject to change.

Amphenol Air LB France reserves the right to proceed with modifications without prior notice. For any additional information, contact us.

Copyright: Avions © AIRBUS S.A.S. 2013 – photo by exm company | F. LANCELOT ; Hélicoptère © Anthony PECCHI | AIRBUS Helicopters ; Rail © Aleksandar Mijatovic | Fotolia ; Industrie © Nataliya Hora | Fotolia ; Centrale © Kletr | Fotolia ; Tension © Rumkugel | Fotolia