

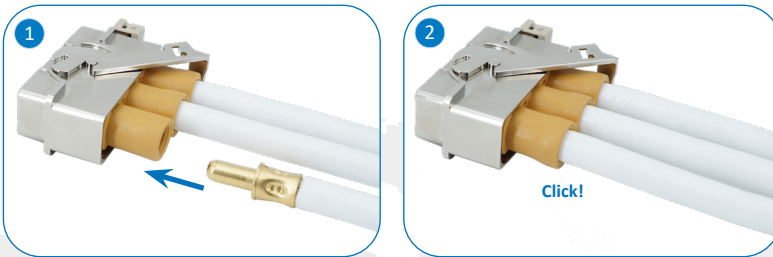


Aeronautic
Defence

CONTACTS INSERTION / EXTRACTION

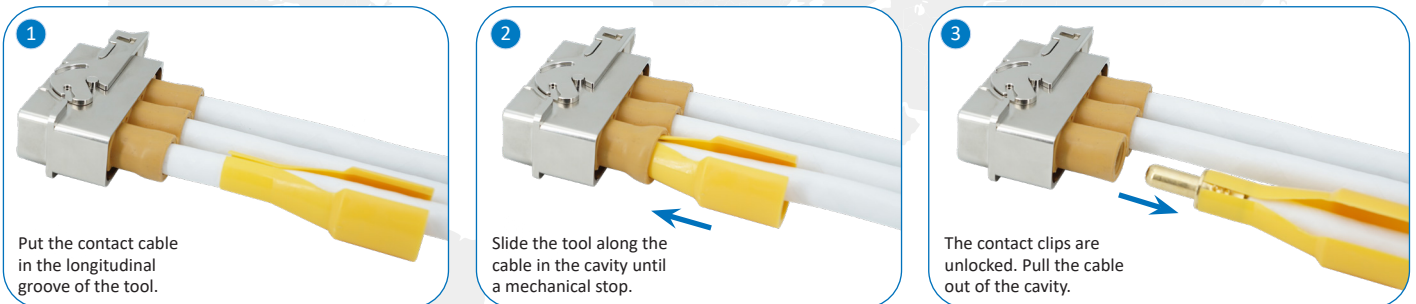
CONTACTS INSERTION

The contacts insertion is made without any tool.



CONTACTS EXTRACTION

The contacts extraction is made with standardized tool P/N: M81969/14-08 (size 0) or M81969/14-07 (size 4).



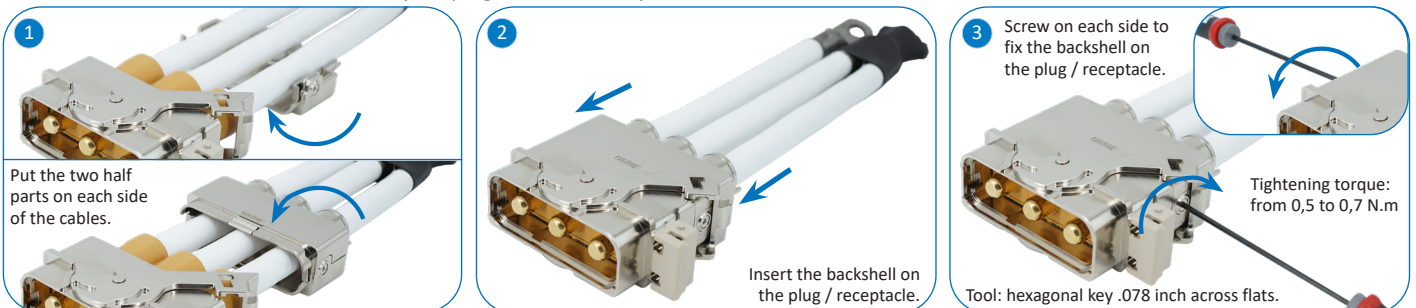
BACKSHELL MOUNTING / UNMOUNTING

BACKSHELL MOUNTING

The backshell is composed of two half parts and two captive screws.

It must be mounted after the contacts insertion.

The backshell is mounted in the same way for plug as for the receptacle.



Your partner for high performance connectors and attachment systems



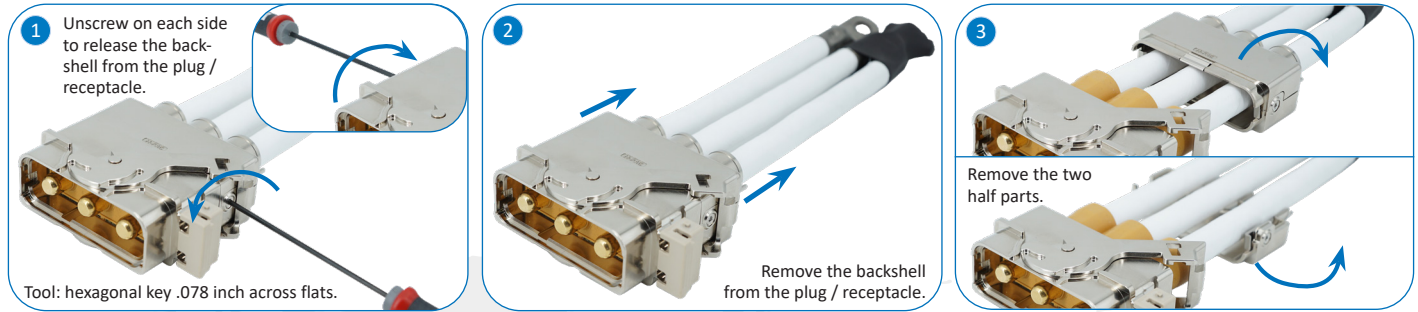
Amphenol Air LB
Your Satisfaction. Everyday. Everywhere.





Aeronautic
Defence

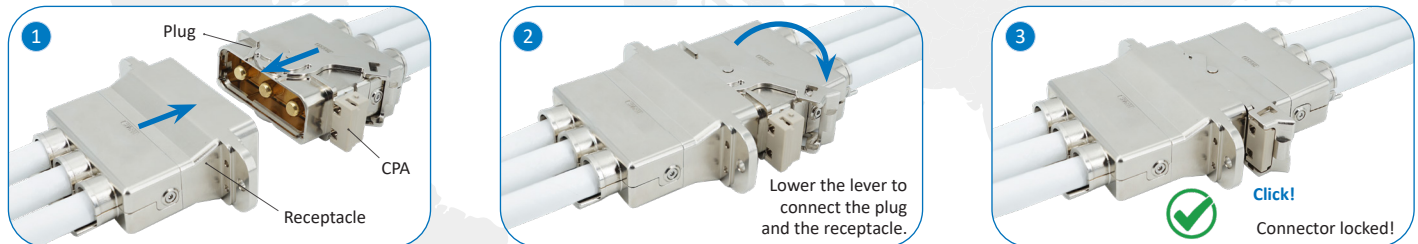
BACKSHELL UNMOUNTING



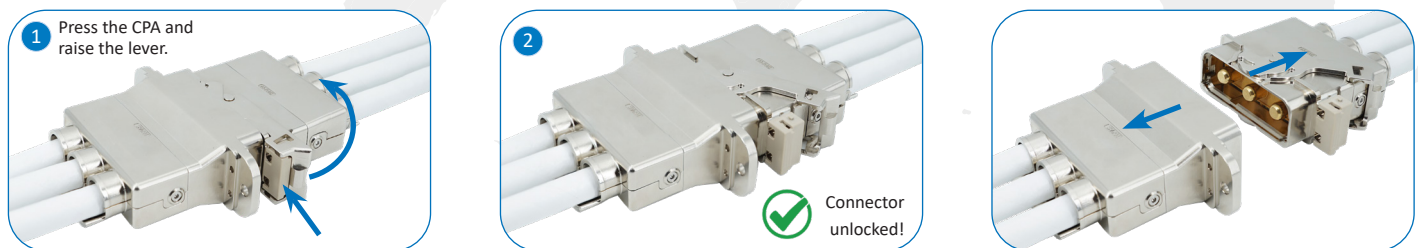
CONNECTOR LOCKING / UNLOCKING

CONNECTOR LOCKING

The locking is made on plug side.
The CPA (Connector Position Assurance) ensures the correct position of the locking mechanism.



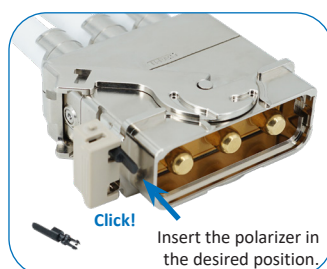
CONNECTEUR UNLOCKING



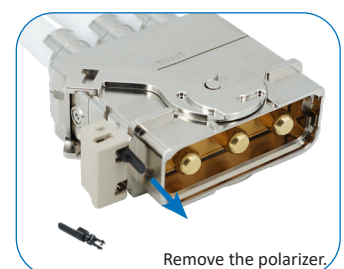
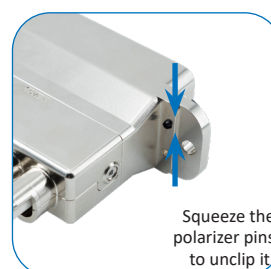
POLARIZERS INSERTION / EXTRACTION

POLARIZER INSERTION

Each plug / receptacle can contain 2 polarizers.
Each polarizer can be put in 6 different positions.



POLARIZER EXTRACTION



This document is non-contractual. The information included in this catalogue is subject to change.

Amphenol Air LB France reserves the right to proceed with modifications without prior notice. For any additional information, contact us.

Copyright: Avions © AIRBUS S.A.S. 2013 – photo by exm company | F. LANCELOT ; Hélicoptère © Anthony PECCHI | AIRBUS Helicopters ; Rail © Aleksandar Mijatovic | Fotolia ; Industrie © Nataliya Hora | Fotolia ; Centrale © Kletr | Fotolia ; Tension © Rumkugel | Fotolia