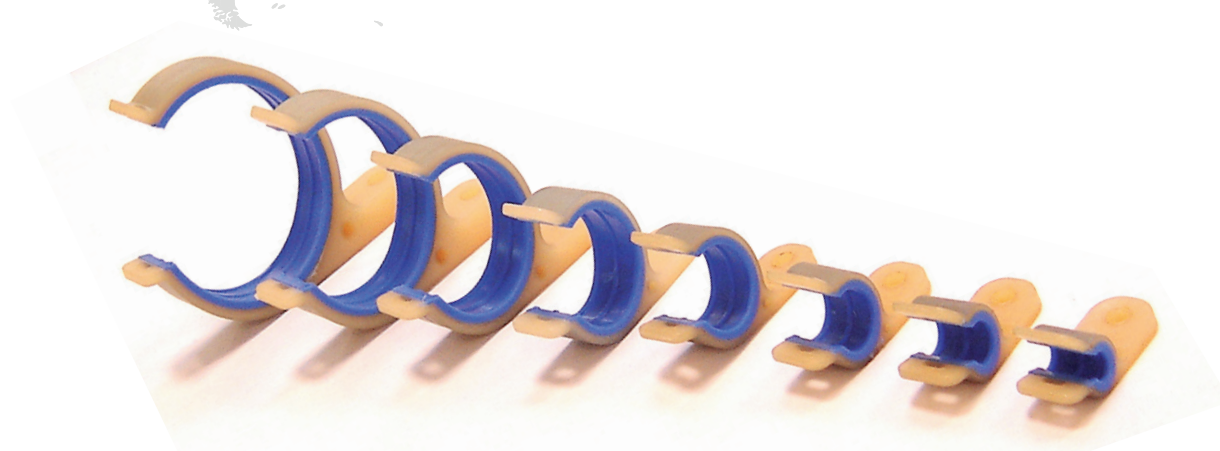




# Industrial Cable clamps



Industry



BROCHURE 08/17 - V3.0

Customer Service  
2 rue Clément ADER, Zac de Wé  
08110 CARIGNAN  
FRANCE  
Tel : +33 (0)3 24 22 32 66  
Fax : +33 (0)3 24 22 38 72  
customer-service@amphenol-airlb.fr  
www.amphenol-airlb.fr



**Amphenol Air LB**  
Your Satisfaction. Everyday. Everywhere.

# PRESENTATION

Industrial Cable clamps, in composite and silicone, are designed to keep the cable harnesses securely maintained on structure. They are fixed on structure by a screw and a washer (not supplied) and closed with a standard cable-tie (not supplied) of 5,5 mm width maximum.

LIGHTWEIGHT

Robust and flexible, they absorb shocks, vibrations, and offer an unequalled protection of bundles against pinching, crushing or mechanical wear, thanks to a silicone cushion.

RELIABILITY

They are suited for applications in standard environment (general use) and temperatures up to 150°C.

They are available in 8 sizes, for bundle diameters from 5 to 48 mm.

## ADVANTAGES

- Resistant to low and high temperature
- Resistant to shocks and vibrations
- Not corrosive and not conductive materials
- Reliability of your installation, cables can not be damaged
- Easy installation thanks to elastic deformation properties
- Resistant to mineral and synthetic oils
- Pre-mounting on structure possible

## APPLICATIONS IN HARSH ENVIRONMENT

Applications with shocks and vibrations

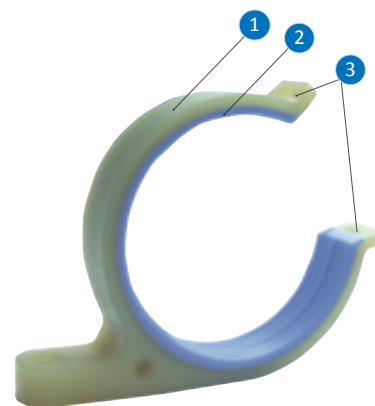
## REACH AND ROHS

In accordance with the REACH spec.  
In accordance with the RoHS spec.

## CLAMP RANGE

8 sizes available

Size	01	02	03	04	05	06	07	08
Bundle diameter (mm)	5 to 7	7 to 10	10 to 14	14 to 19,5	19,5 to 26,5	26,5 to 35	35 to 45	39,5 to 48



### CAPTION

- 1 - Clamp Band
- 2 - Silicone Cushion
- 3 - Fixing by cable-tie 5,5 mm width max.

# MAIN TECHNICAL FEATURES

## MATERIAL

Clamp Band : Thermoplastic (natural colour)  
Cushion : Silicone elastomer

## ENVIRONMENTAL

Operating Temperature : -55° to +150°C permanent

## ELECTRICAL

Insulation Resistance : > 10<sup>6</sup> MΩ

## FLAMMABILITY / SMOKE / TOXICITY

UL94VO  
NFF16101/102 Exigency 3  
EN45545 (HL3 R22)

## WEIGHTS

Size	01	02	03	04	05	06	07	08
Weight (g)	2,2	2,7	3,3	4,2	5,5	8,6	12	14,7

## MECHANICAL

Shocks : 6g during 20 ms  
Vibrations : 3 H per axis, resonance frequency > 30 Hz  
Windmilling test : 6g, frequency 2,9 to 30 Hz  
Load test : depending on the clamp size, in 4 directions  
Nose wheel embalance : 3,5 to 10g, frequency 5 to 27 Hz

## MOUNTING

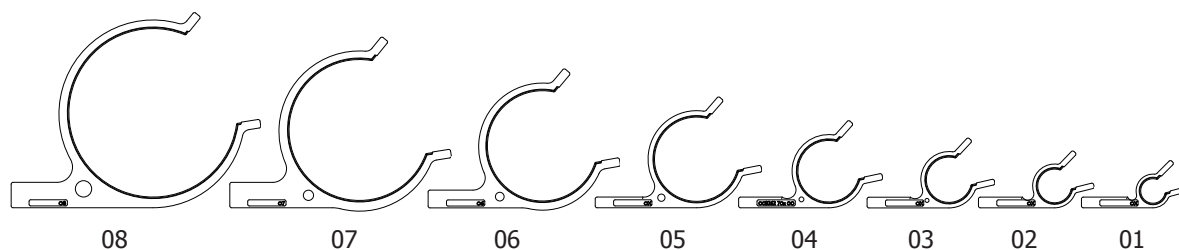
Closure and Fixing : Screw / washer Ø 5,2 mm  
Screw / washer (recommended) : NSA1801-03 / NAS1149  
Tightening torque : 3,2 Nm (+/- 0,5 Nm)  
Clamp closure : Cable-tie (5,5 mm width)  
Cable-tie (recommended) : NSA935401-05



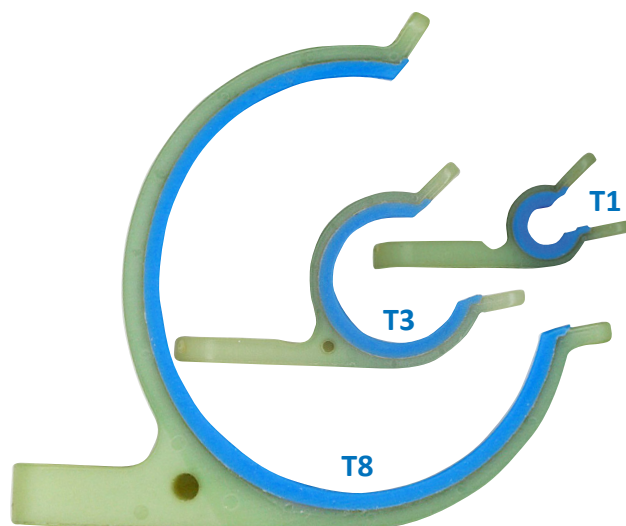
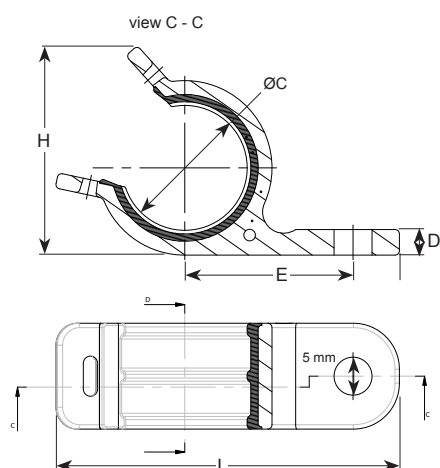
# PART NUMBERS & DIMENSIONS

## PART NUMBERING SYSTEM

003262 7\*\* 00  
Clamp size : 01 to 08



## TECHNICAL DRAWINGS



Scale 1

## DIMENSIONS

Part Number	Clamp size	ØC Admissible Bundle diameter (mm)	E Centre-to-centre (mm)	L Width (mm)	H Height (mm)	D Thickness (mm)
003262 701 00	01	5 à 7	17	34,8	15,4	3,5
003262 702 00	02	7 à 10	18,5	37,9	18,7	
003262 703 00	03	10 à 14	20,4	41,5	23	
003262 704 00	04	14 à 19,5	23,05	47,5	28,8	
003262 705 00	05	19,5 à 26,5	26,75	54,5	36	
003262 706 00	06	26,5 à 35	31	62,7	45	5,8
003262 707 00	07	35 à 45	36	72,3	54,9	8,4
003262 708 00	08	39,5 à 48	40	81,5	63,7	8,3

General tolerance according to JS15  
For all others definitions, please contact us.

# IMPLEMENTATION

Fixing and closure of industrial cable clamps are completed in 2 steps.

Pre-mounting on structure is possible. Once clamps are mounted on structure and cable harnesses put in, then clamps can be closed.

## ■ CLAMP FIXING

Industrial cable clamps are fixed on structure, using a screw and a washer (not supplied) matching the diameter of the fixing hole (5,2 mm). Amphenol Air LB France recommend to use the following hardware :

- Screw : NSA1801-03
- Washer : NAS1149

Tightening torque : 3,2 Nm (nominal)



## ■ BUNDLE INSERTION & CLAMP CLOSING

Elastic properties of materials provide an easy insertion of Cable harnesses in the Clamps.

They are closed with a cable-tie (5,5 mm width maximum). Amphenol Air LB France recommend to use a cable-tie as per NSA935401-05 standard.

Amphenol Air LB France recommend to use a cable-tie tool, as per MS 90387-1 (position 6 to 8), to provide the required tightening torque (about 120 N).

