



Interconnect solutions &
Attachment systems



Embedded solutions
for
Missile



TYPICAL USE OF PRODUCTS PER APPLICATION

6 SEEKER

1750 DISTRIBUTION MODULES + RAIL

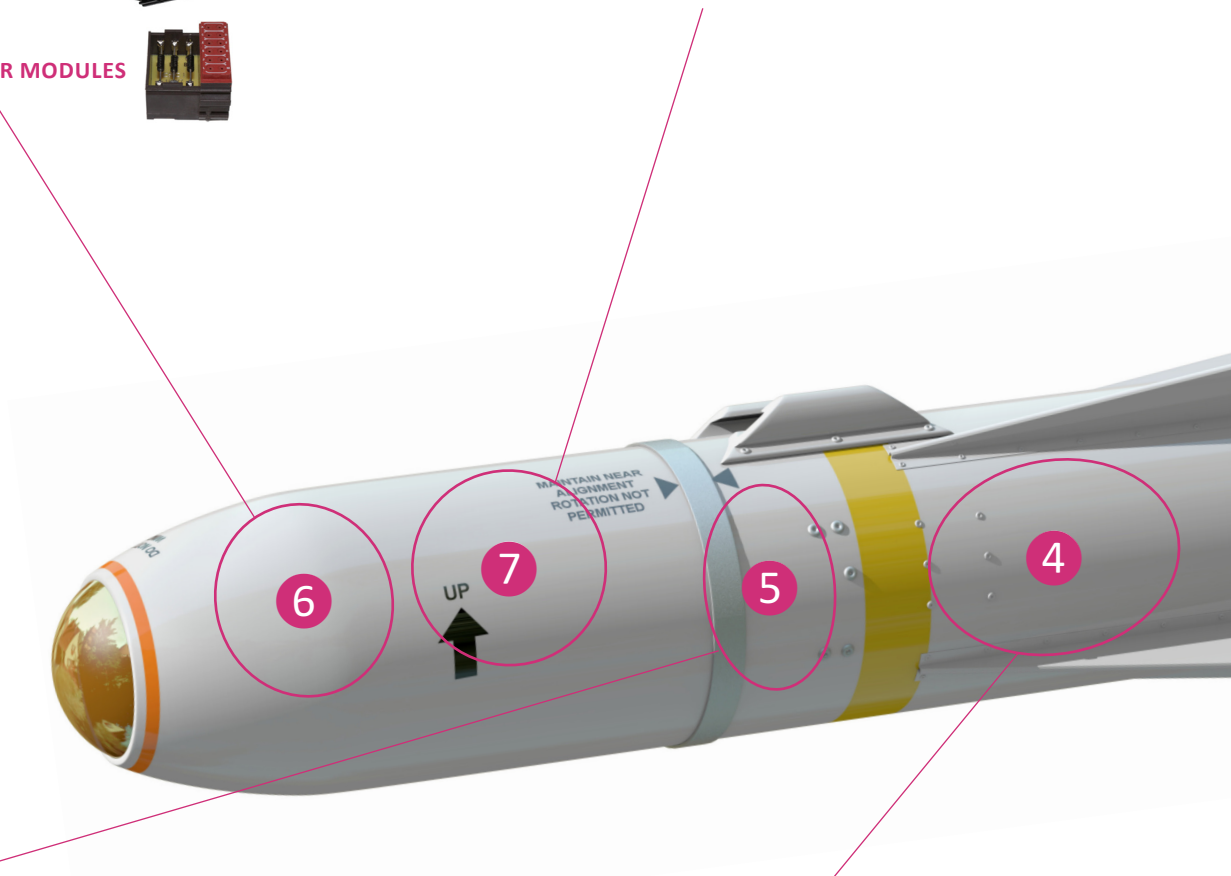


1765 COMPONENT CARRIER MODULES



7 WEAPON CONTROLLER

SUB D ABS1145 / ASNE0237



5 BATTERY CONNECTOR

CUSTOM DESIGN

Custom technical solutions on request



4 TURBOJET & TANK

CC5516 FIXING SYSTEMS



LAUNCHERS

Amphenol Air LB offers solutions for all kind of launchers as well.

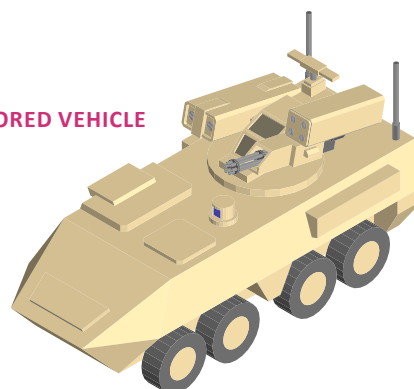
Consult our dedicated application brochures:

- military aerospace
- armored vehicle
- military ship and submarine



① MILITARY AEROSPACE

② ARMORED VEHICLE



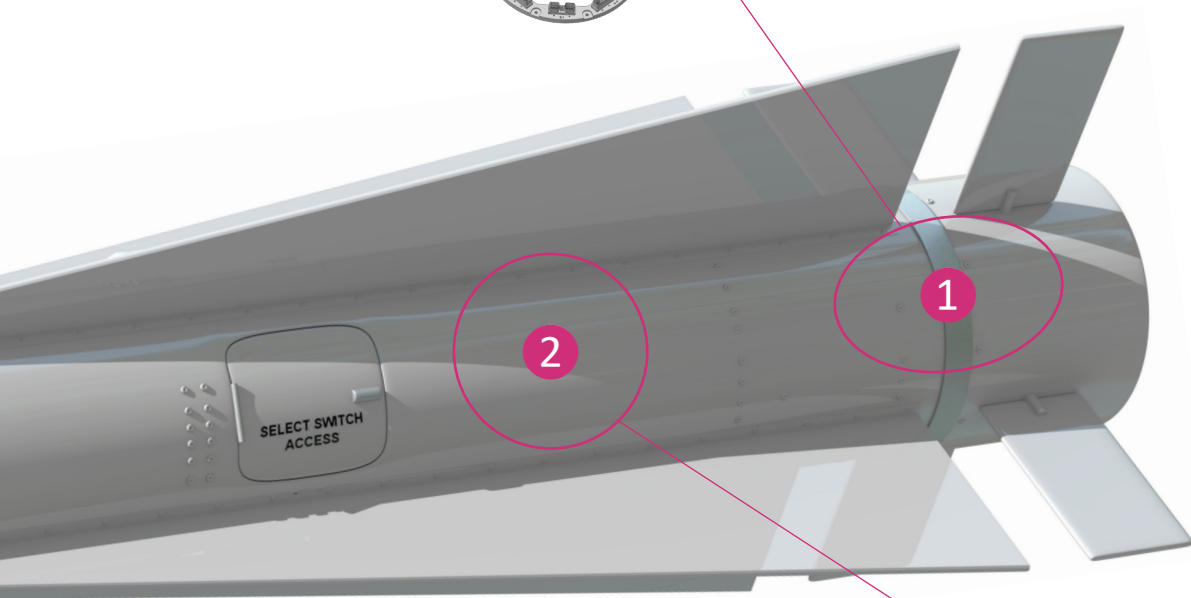
① INTERSTAGE

SIM / EN4165 CONNECTORS



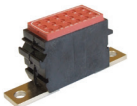
SIM / EN4165 PLATINE AND SPECIFIC DESIGN

Custom designs on request
such as following example



② POWER / BATTERY

1758 GROUNDED DISTRIBUTION MODULES

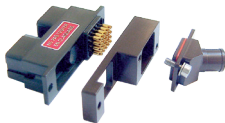


③ MISSILE LAUNCH SYSTEMS

CERAMIC INTERFACE UMBILICAL CONNECTORS



FILTERED SIM



③ MILITARY SHIP



④ SUBMARINE

TYPICAL USE PER PRODUCT RANGE

Our products are present in several embedded applications for Missiles.

1750 distribution modules + rail

- Seeker 6

1758 grounded distribution modules

- Power / Battery 2

1765 component carrier modules

- Seeker 6

CC5516 Fixing systems

- Turbojet & Tank 4

Filtered SIM

- Missile launch systems 3

SIM / EN4165 connectors

- Interstage 1

SIM / EN4165 platine and specific design

- Interstage 1

Sub D ABS1145 / ASNE0237

- Weapon controller 7

Ceramic interface umbilical connectors

- Missile launch systems 3

Customer Service

Tel. : +33 (0)3 24 22 32 66 - Fax : +33 (0)3 24 22 38 72
customer-service@amphenol-airlb.fr

Technical Support

Tel. : +33 (0)3 24 22 78 63
technical-support@amphenol-airlb.fr

This document is non-contractual. The information included in this catalogue is subject to change.

Amphenol Air LB France reserves the right to proceed with modifications without prior notice. For any additional information, contact us.

© AIRBUS S.A.S. 2013 – photo by exm company / F. LANCELOT ; © Anthony PECCHI | AIRBUS Helicopters ; © Aleksandar Mijatovic | Fotolia ; © Nataliya Hora | Fotolia ; © Kletr | Fotolia ; © Rumkugel | Fotolia ; © Esteban De Armas | Shutterstock.com ; © Guido Vrola | 123RF

